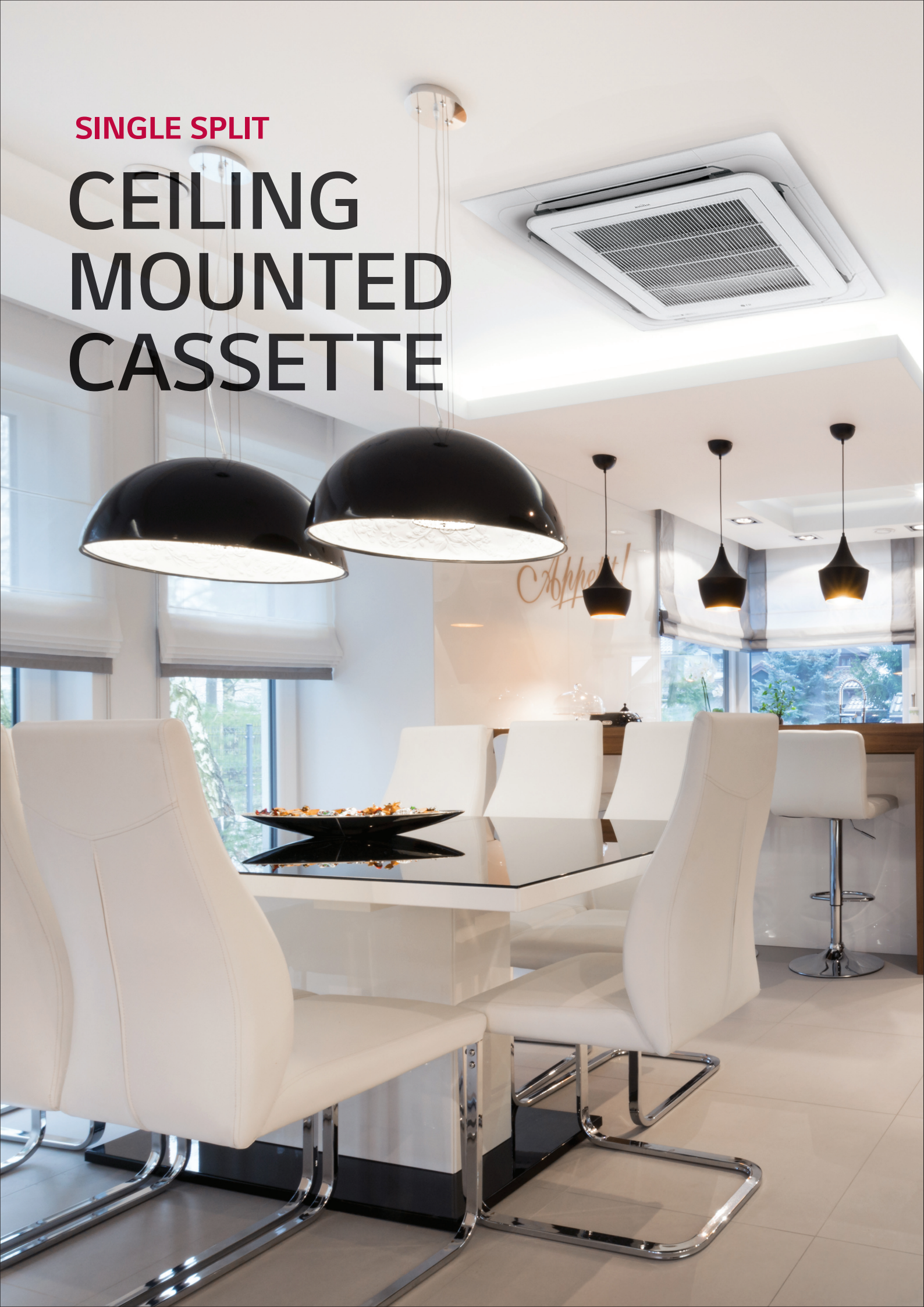


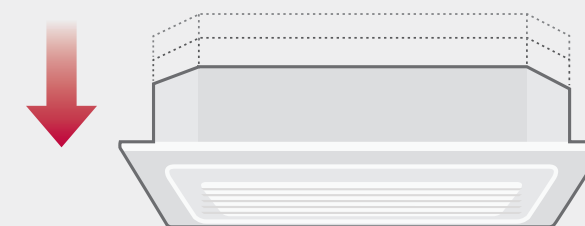
SINGLE SPLIT CEILING MOUNTED CASSETTE



CEILING MOUNTED CASSETTE

Compact Size

The indoor unit with slim and compact dimensions has reduced the restriction which enables successful installation in various spaces.

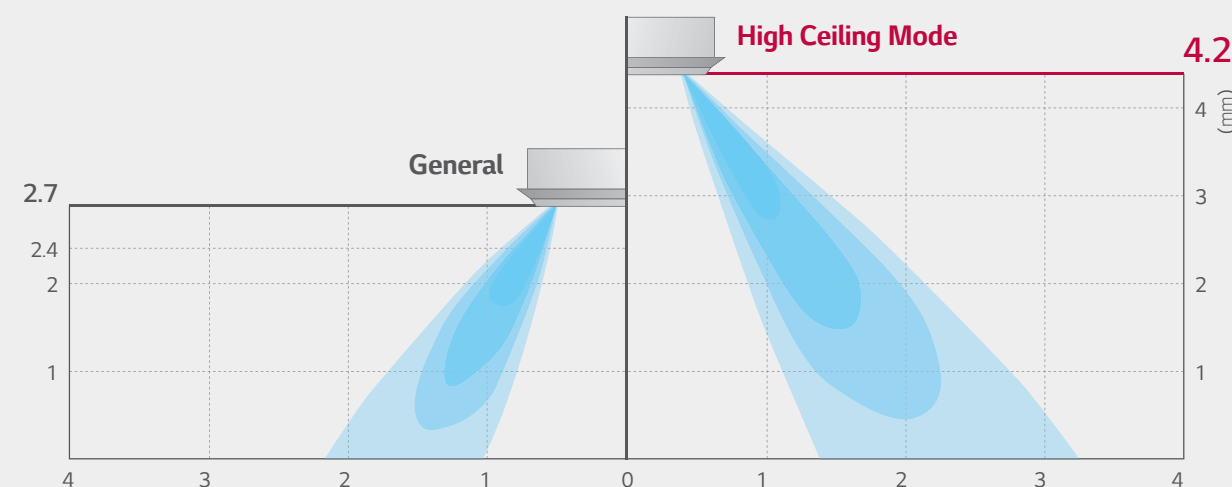


Length Width : 840 x 840mm

Standard Inverter	Height
7.1 ~ 8.0kW	204mm
10.0kW	246mm
12.5 ~ 15kW	288mm

High Ceiling Mode

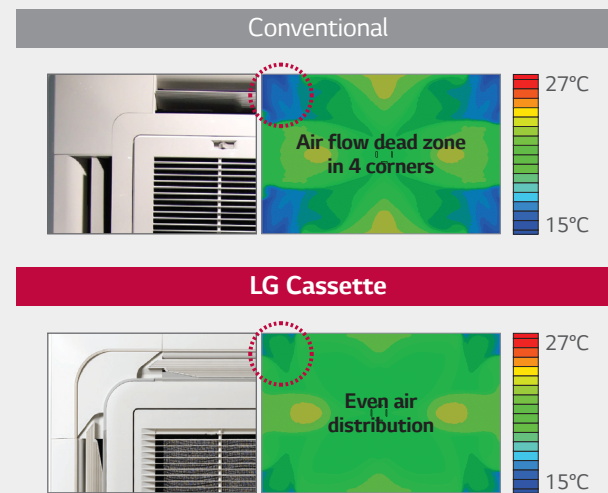
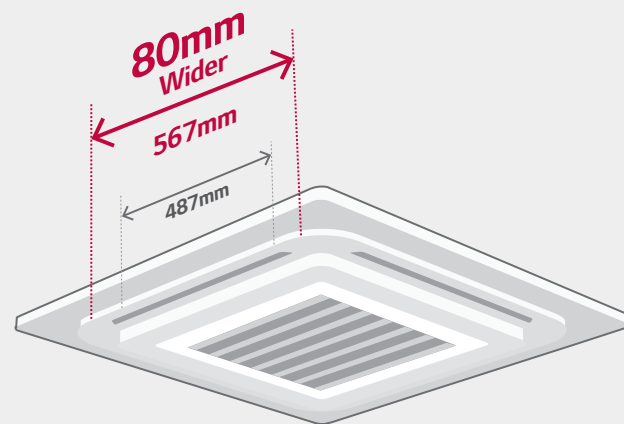
High ceiling mode provides powerful cooling and heating up to 4.2m in height, from ceiling to floor.



CEILING MOUNTED CASSETTE

Wide Jet Air Flow

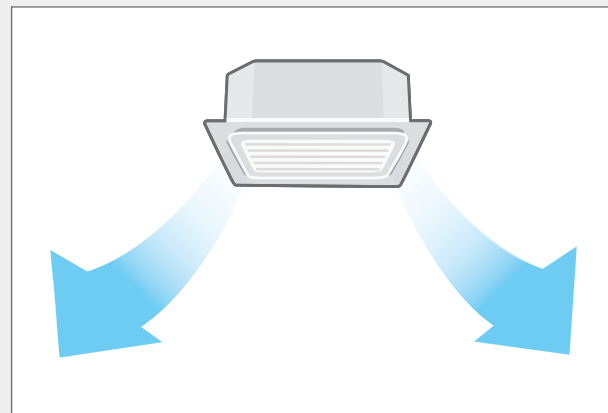
Improved vanes reduce the curved area and provide even distribution.



Independent Vane Operation

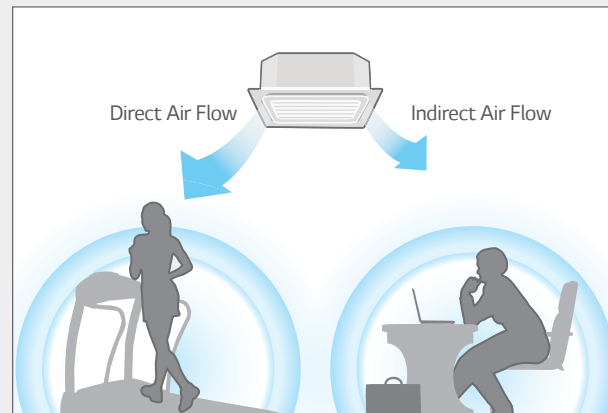
The independent vane operation feature uses separate motors, making it possible to control all four vanes independently.

All Vane Operation



* Wired remote controller PQRCVSLO (QW) applied

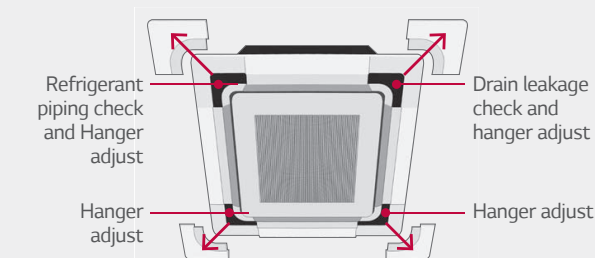
Independent Vane Control



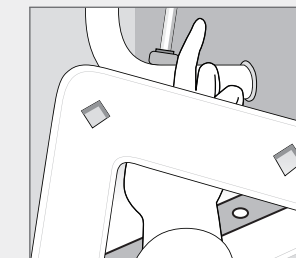
Convenient Panel Installation

The detachable corner design makes it easy to adjust the hanger during installation and to check for leakages in the drain connection pipe.

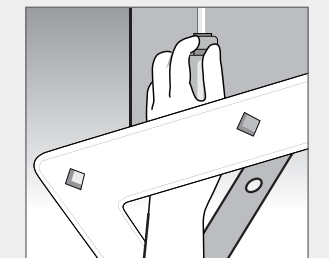
Detachable Corner Design



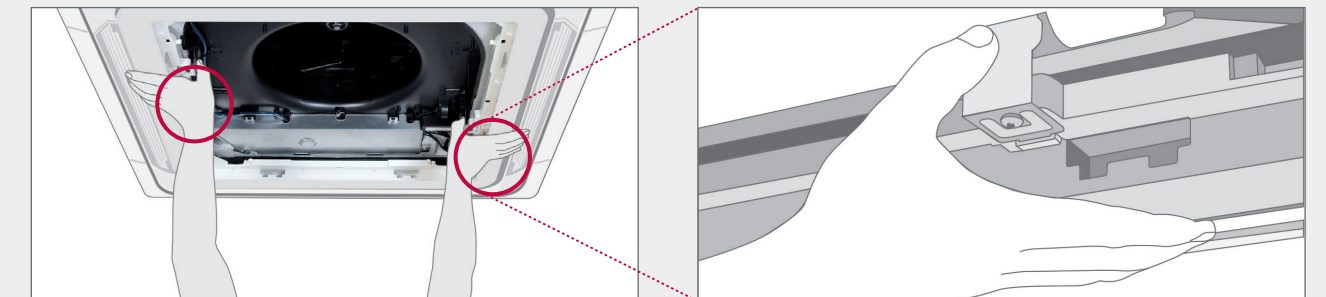
Drain Leakage Check



Hanger Adjust

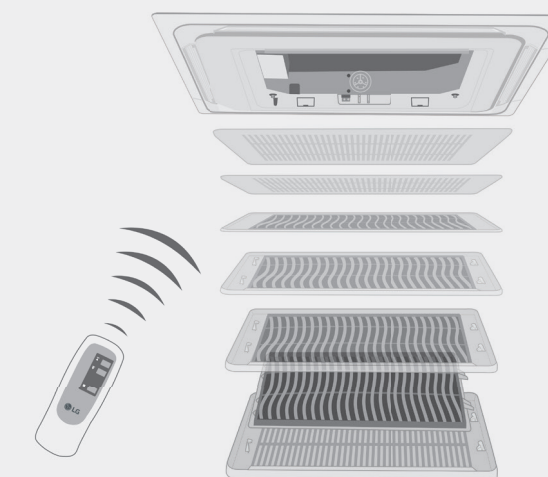


It is easy to install the panel to the body, using the button type panel design.

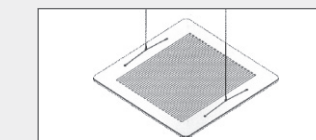


Auto Elevation Grille

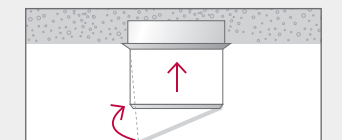
Easy filter cleaning with elevation grill.



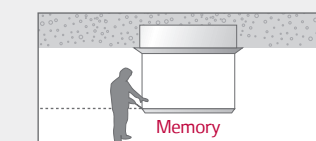
4-Point Support Structure



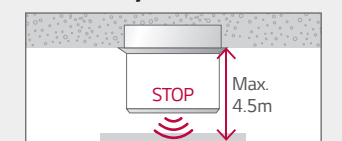
Auto Leveling



Memory for User's Level



Auto Stop Detection

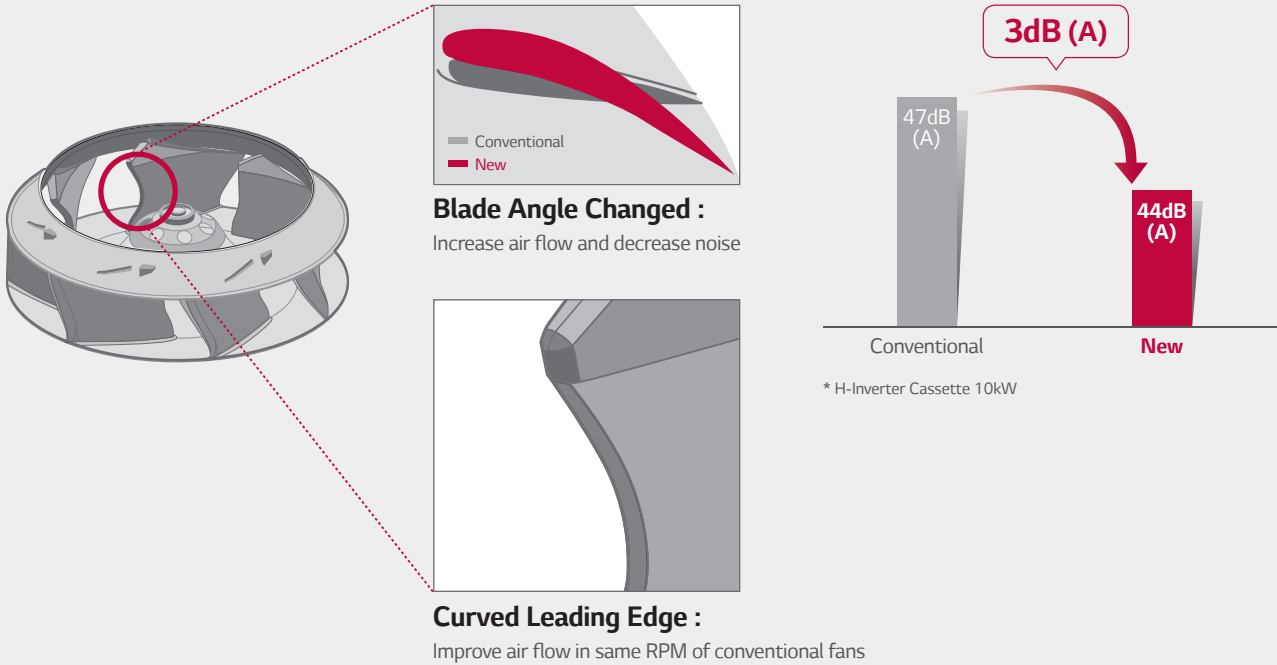


* Operating with wired remote controller PQRCVSLO(QW) and wireless remote controller included in PTEGM0.
* Except CT09 NR2 / CT12 NR2 / CT18 NQ2
* Applied to cassette panel PT-UMC1

CEILING MOUNTED CASSETTE

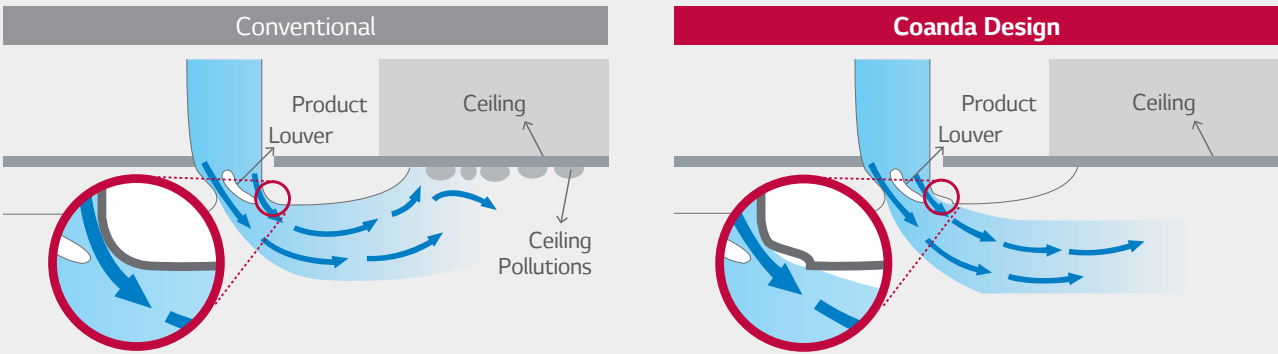
Quiet Operation with 3D Fan

New technology of 3D fan is applied to H-Inverter cassettes 10 ~ 14kW. It increases air flow but reduces noise.



Prevent Ceiling Pollution

Coanda design of air outlet can prevent contamination of ceiling.



H-Inverter

CEILING MOUNTED CASSETTE

UT36H / UT42H / UT48H



UU36WH / UU42WH / UU48WH

INDOOR				UT36H NM4	UT42H NM4	UT48H NM4
Capacity	Cooling	Min / Nom / Max	kW	4.5 / 9.5 / 13.0	5.0 / 12.1 / 14.5	5.5 / 13.4 / 16.0
	Heating	Min / Nom / Max	kW	5.0 / 10.8 / 13.7	5.5 / 13.5 / 16.5	6.1 / 15.5 / 18.0
Low Temperature Capacity	Heating -7°C	Max		11.5	13.9	15.3
	Cooling	Nom	kW	2.15	3.13	3.80
Power Input (Set)	Heating	Nom	kW	2.39	3.35	4.05
		Nom	W	210	210	210
Running Current	Cooling / Heating	Nom	A	9.1 / 11.2	14.2 / 15.3	17.4 / 17.8
Power Supply			Ø / V / Hz	1 / 220-240 / 50	1 / 220-240 / 50	1 / 220-240 / 50
EER				4.42	3.87	3.53
COP				4.53	4.03	3.83
SEER				7.31	-	-
SCOP				4.61	-	-
Pdesign (@ -10°C)			kW	10.0	-	-
Seasonal Energy Label	Cooling / Heating			A++ / A++	-	-
Annual Energy Consumption	Cooling / Heating		kWh	455 / 3,043	-	-
Piping Connection	Liquid		mm (inch)	Ø9.52 (3/8)	Ø9.52 (3/8)	Ø9.52 (3/8)
	Gas		mm (inch)	Ø15.88 (5/8)	Ø15.88 (5/8)	Ø15.88 (5/8)
	Drain	O.D. / I.D.	mm	32 / 25	32 / 25	32 / 25
Air Flow Rate		High / Medium / Low	m³/min	32.0 / 26.1 / 20.2	33.0 / 28.0 / 21.0	33.0 / 28.0 / 22.0
Sound Pressure	Cooling	High / Medium / Low	dBA	44 / 40 / 36	45 / 41 / 37	45 / 41 / 38
Sound Power	Cooling	Max	dBA	62	62	62
Dehumidification Rate			l/h	1.5	3.3	4.4
Dimensions	Body	W x H x D	mm	840 x 288 x 840	840 x 288 x 840	840 x 288 x 840
Net Weight	Body		kg	28.0	28.0	28.0
Decoration Panel	Model			PT-UMC1	PT-UMC1	PT-UMC1
	Color			Morning Fog (RAL 120-4)	Morning Fog (RAL 120-4)	Morning Fog (RAL 120-4)
	Dimensions	W x H x D	mm	950 x 25 x 950	950 x 25 x 950	950 x 25 x 950
	Weight		kg	5.0	5.0	5.0

OUTDOOR				UU36WH U34	UU42WH U34	UU48WH U34
Compressor	Type			Twin Rotary	Twin Rotary	Twin Rotary
Airflow Rate		Nom	m³/min	110	110	110
Sound Pressure	Cooling	Nom	dBA	51	52	52
	Heating	Nom	dBA	53	54	54
Sound Power	Cooling	Max	dBA	66	67	68
Dimensions	W x H x D		mm	950 x 1,380 x 330	950 x 1,380 x 330	950 x 1,380 x 330
Net Weight			kg	91.5	91.5	91.5
Refrigerant	Type			R410A	R410A	R410A
	Charge		g	3,400	3,400	3,400
	Additional Charge (after 10m)		g/m	40	40	40
Operation Range (Outdoor)	Cooling	Min ~ Max	°C DB	-15 ~ 48	-15 ~ 48	-15 ~ 48
	Heating	Min ~ Max	°C WB	-20 ~ 18	-20 ~ 18	-20 ~ 18
Power Supply			Ø / V / Hz	1 / 220-240 / 50	1 / 220-240 / 50	1 / 220-240 / 50
Power Supply Cable			No. x mm²	3C x 5.0	3C x 5.0	3C x 5.0
Transmission Cable			No. x mm²	4C x 0.75	4C x 0.75	4C x 0.75
Circuit Breaker			A	40	40	40
Piping Length Total		Min ~ Max	m	5 ~ 75	5 ~ 75	5 ~ 75
Piping Elevation Difference	IDU - ODU	Max	m	30	30	30
	Liquid		mm (inch)	Ø9.52 (3/8)	Ø9.52 (3/8)	Ø9.52 (3/8)
Piping Connection	Gas		mm (inch)	Ø15.88 (5/8)	Ø15.88 (5/8)	Ø15.88 (5/8)

Note : 1. Due to our policy of innovation some specifications may be changed without notification.
2. Definition of Power Input Nominal conditions – Performance tested under EN14511
3. Capacities are based on the following conditions:
Cooling : - Indoor Temperature 27°C DB / 19°C WB - Outdoor Temperature 35°C DB / 24°C WB Heating : - Indoor Temperature 20°C DB / 15°C WB - Outdoor Temperature 7°C DB / 6°C WB
4. Annual energy consumption : based on average use of 350 running hours in cooling and 1,400 hours in heating per year at seasonal condition
5. This product contains fluorinated greenhouse gases (R410A)

H-Inverter

CEILING MOUNTED CASSETTE



UT36H / UT42H / UT48H



UU37WH / UU43WH / UU49WH

INDOOR				UT36H NM4	UT42H NM4	UT48H NM4
Capacity	Cooling	Min / Nom / Max	kW	4.5 / 9.5 / 13.0	5.0 / 12.1 / 14.5	5.5 / 13.4 / 16.0
	Heating	Min / Nom / Max	kW	5.0 / 10.8 / 13.7	5.5 / 13.5 / 16.5	6.1 / 15.5 / 18.0
Low Temperature Capacity	Heating -7°C	Max	kW	11.5	13.9	15.3
Power Input (Set)	Cooling	Nom	kW	2.15	3.13	3.80
	Heating	Nom	kW	2.39	3.35	4.05
Power Input (Indoor)		Nom	W	210	210	210
Running Current	Cooling / Heating	Nom	A	3.8 / 4.2	5.5 / 5.9	6.7 / 7.1
Power Supply			Ø / V / Hz	1 / 220-240 / 50	1 / 220-240 / 50	1 / 220-240 / 50
EER				4.42	3.87	3.53
COP				4.53	4.03	3.83
SEER				6.81	-	-
SCOP				4.61	-	-
Pdesign (@ -10°C)			kW	10.0	-	-
Seasonal Energy Label	Cooling / Heating			A++ / A++	-	-
Annual Energy Consumption	Cooling / Heating		kWh	489 / 3,043	-	-
Piping Connection	Liquid		mm (inch)	Ø9.52 (3/8)	Ø9.52 (3/8)	Ø9.52 (3/8)
	Gas		mm (inch)	Ø15.88 (5/8)	Ø15.88 (5/8)	Ø15.88 (5/8)
	Drain	O.D. / I.D.	mm	32 / 25	32 / 25	32 / 25
Air Flow Rate		High / Medium / Low	m³/min	32.0 / 26.1 / 20.2	33.0 / 28.0 / 21.0	33.0 / 28.0 / 22.0
Sound Pressure	Cooling	High / Medium / Low	dBA	44 / 40 / 36	45 / 41 / 37	45 / 41 / 38
Sound Power	Cooling	Max	dBA	62	62	62
Dehumidification Rate			l/h	1.5	3.3	4.4
Dimensions	Body	W x H x D	mm	840 x 288 x 840	840 x 288 x 840	840 x 288 x 840
Net Weight	Body		kg	28.0	28.0	28.0
Decoration Panel	Model			PT-UMC1	PT-UMC1	PT-UMC1
	Color			Morning Fog (RAL 120-4)	Morning Fog (RAL 120-4)	Morning Fog (RAL 120-4)
	Dimensions	W x H x D	mm	950 x 25 x 950	950 x 25 x 950	950 x 25 x 950
	Weight		kg	5.0	5.0	5.0

OUTDOOR				UU37WH U33	UU43WH U33	UU49WH U33
Compressor	Type			Twin Rotary	Twin Rotary	Twin Rotary
Airflow Rate		Nom	m³/min	110	110	110
Sound Pressure	Cooling	Nom	dBA	51	52	52
	Heating	Nom	dBA	53	54	54
Sound Power	Cooling	Max	dBA	66	67	68
Dimensions	W x H x D		mm	950 x 1,380 x 330	950 x 1,380 x 330	950 x 1,380 x 330
Net Weight			kg	93.0	93.0	93.0
Refrigerant	Type			R410A	R410A	R410A
	Charge		g	3,400	3,400	3,400
	Additional Charge (after 10m)		g/m	40	40	40
Operation Range (Outdoor)	Cooling	Min ~ Max	°C DB	-15 ~ 48	-15 ~ 48	-15 ~ 48
	Heating	Min ~ Max	°C WB	-20 ~ 18	-20 ~ 18	-20 ~ 18
Power Supply			Ø / V / Hz	3 / 380-415 / 50	3 / 380-415 / 50	3 / 380-415 / 50
Power Supply Cable			No. x mm²	5C x 2.5	5C x 2.5	5C x 2.5
Transmission Cable			No. x mm²	4C x 0.75	4C x 0.75	4C x 0.75
Circuit Breaker			A	20	20	20
Piping Length Total		Min ~ Max	m	5 ~ 75	5 ~ 75	5 ~ 75
Piping Elevation Difference	IDU - ODU	Max	m	30	30	30
	Liquid		mm (inch)	Ø9.52 (3/8)	Ø9.52 (3/8)	Ø9.52 (3/8)
Piping Connection	Gas		mm (inch)	Ø15.88 (5/8)	Ø15.88 (5/8)	Ø15.88 (5/8)

Note : 1. Due to our policy of innovation some specifications may be changed without notification.
2. Definition of Power Input Nominal conditions – Performance tested under EN14511
3. Capacities are based on the following conditions:
Cooling : - Indoor Temperature 27°C DB / 19°C WB - Outdoor Temperature 35°C DB / 24°C WB Heating : - Indoor Temperature 20°C DB / 15°C WB - Outdoor Temperature 7°C DB / 6°C WB
4. Annual energy consumption : based on average use of 350 running hours in cooling and 1,400 hours in heating per year at seasonal condition
5. This product contains fluorinated greenhouse gases (R410A)

Standard Inverter

CEILING MOUNTED CASSETTE



UU09W / UU12W NEW UU18W NEW UU24W NEW UU30W

INDOOR				CT09 NR2	CT12 NR2	CT18 NQ4	CT24 NP4	UT30 NP4
Capacity	Cooling	Min / Nom / Max	kW	1.0 / 2.5 / 2.8	1.4 / 3.4 / 3.7	2.0 / 5.0 / 5.5	2.8 / 6.8 / 7.8	3.2 / 8.0 / 8.8
	Heating	Min / Nom / Max	kW	1.2 / 3.0 / 3.3	1.6 / 4.0 / 4.4	2.2 / 5.8 / 6.8	3.2 / 8.0 / 8.8	3.6 / 9.0 / 9.9
Low Temperature Capacity	Heating -7°C	Max	kW	2.7	3.6	4.9	7.2	8.1
Power Input (Set)	Cooling	Nom	kW	0.75	1.06	1.56	2.00	2.49
	Heating	Nom	kW	0.81	1.10	1.66	2.22	2.72
Power Input (Indoor)		Nom	W	20	20	40	60	80
Running Current	Cooling / Heating	Nom	A	3.3 / 3.5	4.61 / 4.78	7.1 / 7.5	8.9 / 9.7	10.8 / 11.8
Power Supply			Ø / V / Hz	1 / 220-240 / 50	1 / 220-240 / 50	1 / 220-240 / 50	1 / 220-240 / 50	1 / 220-240 / 50
EER				3.33	3.21	3.22	3.70	3.21
COP				3.70	3.64	3.62	3.62	3.31
SEER				5.11	5.61	6.10	6.80	6.30
SCOP				3.81	3.91	4.25	4.20	4.00
Pdesign (@ -10°C)			kW	2.8	3.0	4.1	6.3	6.8
Seasonal Energy Label	Cooling / Heating			A / A	A+ / A	A++ / A+	A++ / A+	A++ / A+
Annual Energy Consumption	Cooling / Heating		kWh	172 / 1,032	213 / 1,077	287 / 1,351	350 / 2,110	444 / 2,380
Piping Connection	Liquid		mm (inch)	Ø6.35 (1/4)	Ø6.35 (1/4)	Ø6.35 (1/4)	Ø9.52 (3/8)	Ø9.52 (3/8)
	Gas		mm (inch)	Ø9.52 (3/8)	Ø9.52 (3/8)	Ø12.7 (1/2)	Ø15.88 (5/8)	Ø15.88 (5/8)
	Drain	O.D. / I.D.	mm	Ø32.0 / 25.0	Ø32.0 / 25.0	Ø32.0 / 25.0	Ø32.0 / 25.0	Ø32.0 / 25.0
Air Flow Rate		High / Medium / Low	m³/min	8.5 / 7.0 / 6.0	9.5 / 8.0 / 7.0	13.0 / 12.0 / 11.0	17.0 / 15.0 / 13.0	19.0 / 17.0 / 15.0
Sound Pressure	Cooling	High / Medium / Low	dBA	36 / 33 / 30	38 / 35 / 32	41 / 39 / 36	38 / 36 / 34	40 / 37 / 35
Sound Power	Cooling	Max	dBA	48	51	57	57	58
Dehumidification Rate			l/h	1.4	1.7	2.1	2.4	2.5
Dimensions	Body	W x H x D	mm	570 x 214 x 570	570 x 214 x 570	570 x 256 x 570	840 x 204 x 840	840 x 204 x 840
Net Weight	Body		kg	14.0	14.0	15.3	20.5	20.5
Decoration Panel	Model			PT-UQC	PT-UQC	PT-UQC	PT-UMC1	PT-UMC1
	Color			Morning Fog (RAL 120-4)	Morning Fog (RAL 120-4)	Morning Fog (RAL 120-4)	Morning Fog (RAL 120-4)	Morning Fog (RAL 120-4)
	Dimensions	W x H x D	mm	700 x 22 x 700	700 x 22 x 700	700 x 22 x 700	950 x 25 x 950	950 x 25 x 950
	Weight		kg	3.0	3.0	3.0	5.0	5.0

OUTDOOR				UU09W ULD	UU12W ULD	UU18W UE4	UU24W U44	UU30W U44
Compressor	Type			Rotary	Rotary	Twin Rotary	Twin Rotary	Twin Rotary
Airflow Rate		Nom	m³/min	32	32	50	58	58
Sound Pressure	Cooling	Nom	dBA	47	47	47	48	48
	Heating	Nom	dBA	48	48	52	52	52
Sound Power	Cooling	Max	dBA	56	57	63	67	68
Dimensions	W x H x D		mm	770 x 540 x 245	770 x 540 x 245	870 x 655 x 320	950 x 834 x 330	950 x 834 x 330
Net Weight			kg	32.0	44.6	56.1	56.1	58.0
Refrigerant	Type			R410A	R410A	R410A	R410A	R410A
	Charge		g	1,000	1,000	1,300	2,000	2,000
	Additional Charge (after 7.5m)		g/m	20	20	20	40	40
Operation Range (Outdoor)	Cooling	Min ~ Max	°C DB	-10 ~ 43	-10 ~ 43	-15 ~ 48	-15 ~ 48	-15 ~ 48
	Heating	Min ~ Max	°C WB	-18 ~ 18	-18 ~ 18	-18 ~ 18	-18 ~ 18	-18 ~ 18
Power Supply			Ø / V / Hz	1 / 220-240 / 50	1 / 220-240 / 50	1 / 220-240 / 50	1 / 220-240 / 50	1 / 220-240 / 50
Power Supply Cable			No. x mm²	3C x 2.5	3C x 2.5	3C x 2.5	3C x 2.5	3C x 2.5
Transmission Cable			No. x mm²	4C x 0.75	4C x 0.75	4C x 0.75	4C x 0.75	4C x 0.75
Circuit Breaker			A	15	15	20	25	25
Piping Length Total		Min ~ Max	m	5~15	5~15	5 ~ 30	5 ~ 50	5 ~ 50
Piping Elevation Difference	IDU - ODU	Max	m	10	10	30	30	30
	Liquid		mm (inch)	Ø6.35 (1/4)	Ø6.35 (1/4)	Ø6.35 (1/4)	Ø9.52 (3/8)	Ø9.52 (3/8)
Piping Connection	Gas		mm (inch)	Ø9.52 (3/8)	Ø9.52 (3/8)	Ø12.7 (1/2)	Ø15.88 (5/8)	Ø15.88 (5/8)

Note : 1. Due to our policy of innovation some specifications may be changed without notification.
2. Definition of Power Input Nominal conditions – Performance tested under EN14511
3. Capacities are based on the following conditions:
Cooling : - Indoor Temperature 27°C DB / 19°C WB - Outdoor Temperature 35°C DB / 24°C WB Heating : - Indoor Temperature 20°C DB / 15°C WB - Outdoor Temperature 7°C DB / 6°C WB
4. Annual energy consumption : based on average use of 350 running hours in cooling and 1,400 hours in heating per year at seasonal condition
5. This product contains fluorinated greenhouse gases (R410A)

Standard Inverter

CEILING MOUNTED CASSETTE

UT36 / UT42 / UT48 / UT60



UU36W



UU42W / UU48W / UU60W

INDOOR				UT36 NN2	UT42 NM2	UT48 NM2	UT60 NM2
Capacity	Cooling	Min / Nom / Max	kW	4.0 / 10.0 / 11.0	5.0 / 12.5 / 13.8	5.5 / 13.9 / 15.7	5.9 / 14.6 / 16.3
	Heating	Min / Nom / Max	kW	4.4 / 11.0 / 12.1	5.0 / 14.0 / 15.4	6.4 / 15.4 / 17.6	6.8 / 16.9 / 18.7
Low Temperature Capacity	Heating -7°C	Max	kW	9.8	12.5	14.3	15.2
Power Input (Set)	Cooling	Nom	kW	2.82	3.89	4.62	5.40
	Heating	Nom	kW	3.09	3.88	4.51	5.50
Power Input (Indoor)		Nom	W	140	210	210	210
Running Current	Cooling / Heating	Nom	A	12.3 / 13.4	16.9 / 16.9	20.1 / 19.6	23.5 / 23.9
Power Supply			Ø / V / Hz	1 / 220-240 / 50	1 / 220-240 / 50	1 / 220-240 / 50	1 / 220-240 / 50
EER				3.55	3.21	3.01	2.70
COP				3.56	3.61	3.41	3.07
SEER				5.41	-	-	-
SCOP				3.81	-	-	-
Pdesign (@ -10°C)			kW	7.6	-	-	-
Seasonal Energy Label	Cooling / Heating		A / A	-	-	-	-
Annual Energy Consumption	Cooling / Heating		kWh	648 / 2,800	-	-	-
Piping Connection	Liquid		mm (inch)	Ø9.52 (3/8)	Ø9.52 (3/8)	Ø9.52 (3/8)	Ø9.52 (3/8)
	Gas		mm (inch)	Ø15.88 (5/8)	Ø15.88 (5/8)	Ø15.88 (5/8)	Ø15.88 (5/8)
	Drain	O.D. / I.D.	mm	32 / 25	32 / 25	32 / 25	32 / 25
Air Flow Rate		High / Medium / Low	m³/min	24.0 / 22.0 / 19.0	30.0 / 28.0 / 26.0	34.0 / 32.0 / 30.0	34.0 / 32.0 / 30.0
Sound Pressure	Cooling	High / Medium / Low	dBA	43 / 40 / 37	46 / 44 / 43	49 / 47 / 45	49 / 47 / 45
Sound Power	Cooling	Max	dBA	62	65	66	66
Dehumidification Rate			U/h	2.7	3.6	4.4	5.5
Dimensions	Body	W x H x D	mm	840 x 246 x 840	840 x 288 x 840	840 x 288 x 840	840 x 288 x 840
Net Weight	Body		kg	22.3	24.6	24.6	24.6
Decoration Panel	Model			PT-UMC1	PT-UMC1	PT-UMC1	PT-UMC1
	Color			Morning Fog (RAL 120-4)	Morning Fog (RAL 120-4)	Morning Fog (RAL 120-4)	Morning Fog (RAL 120-4)
	Dimensions	W x H x D	mm	950 x 25 x 950	950 x 25 x 950	950 x 25 x 950	950 x 25 x 950
	Weight		kg	5.0	5.0	5.0	5.0

OUTDOOR				UU36W UO2	UU42W U32	UU48W U32	UU60W U32
Compressor	Type			Twin Rotary	Twin Rotary	Twin Rotary	Twin Rotary
Airflow Rate		Nom	m³/min	90	110	110	110
Sound Pressure	Cooling	Nom	dBA	53	52	52	52
	Heating	Nom	dBA	54	54	54	54
Sound Power	Cooling	Max	dBA	66	67	68	71
Dimensions	W x H x D		mm	950 x 1,170 x 330	950 x 1,380 x 330	950 x 1,380 x 330	950 x 1,380 x 330
Net Weight			kg	81.0	92.0	92.0	92.0
Refrigerant	Type			R410A	R410A	R410A	R410A
	Charge		g	2,800	3,400	3,400	3,400
	Additional Charge (after 10m)		g/m	40	40	40	40
Operation Range (Outdoor)	Cooling	Min - Max	°C DB	-15 ~ 48	-15 ~ 48	-15 ~ 48	-15 ~ 48
	Heating	Min - Max	°C WB	-18 ~ 18	-18 ~ 18	-18 ~ 18	-18 ~ 18
Power Supply			Ø / V / Hz	1 / 220-240 / 50	1 / 220-240 / 50	1 / 220-240 / 50	1 / 220-240 / 50
Power Supply Cable			No. x mm²	3C x 5.0	3C x 5.0	3C x 5.0	3C x 5.0
Transmission Cable			No. x mm²	4C x 0.75	4C x 0.75	4C x 0.75	4C x 0.75
Circuit Breaker			A	40	40	40	40
Piping Length Total		Min - Max	m	5 ~ 50	5 ~ 75	5 ~ 75	5 ~ 75
Piping Elevation Difference	IDU - ODU	Max	m	30	30	30	30
Piping Connection	Liquid		mm (inch)	Ø9.52 (3/8)	Ø9.52 (3/8)	Ø9.52 (3/8)	Ø9.52 (3/8)
	Gas		mm (inch)	Ø15.88 (5/8)	Ø15.88 (5/8)	Ø15.88 (5/8)	Ø15.88 (5/8)

Note : 1. Due to our policy of innovation some specifications may be changed without notification.

2. Definition of Power Input Nominal conditions - Performance tested under EN14511

3. Capacities are based on the following conditions:

Cooling : - Indoor Temperature 27°C DB / 19°C WB - Outdoor Temperature 35°C DB / 24°C WB Heating : - Indoor Temperature 20°C DB / 15°C WB - Outdoor Temperature 7°C DB / 6°C WB

4. Annual energy consumption : based on average use of 350 running hours in cooling and 1,400 hours in heating per year at seasonal condition

5. This product contains fluorinated greenhouse gases (R410A)



Standard Inverter

CEILING MOUNTED CASSETTE

UT36 / UT42 / UT48 / UT60



UU37W



UU43W / UU49W / UU61W

INDOOR				UT36 NN2	UT42 NM2	UT48 NM2	UT60 NM2
Capacity	Cooling	Min / Nom / Max	kW	4.0 / 10.0 / 11.0	5.0 / 12.5 / 13.8	5.5 / 13.9 / 15.7	5.9 / 14.6 / 16.3
	Heating	Min / Nom / Max	kW	4.4 / 11.0 / 12.1	5.0 / 14.0 / 15.4	6.4 / 15.3 / 17.6	6.8 / 16.9 / 18.7
Low Temperature Capacity	Heating -7°C	Max	kW	9.8	12.5	14.3	15.2
Power Input (Set)	Cooling	Nom	kW	2.82	3.89	4.62	5.40
	Heating	Nom	kW	3.09	3.88	4.49	5.50
Power Input (Indoor)		Nom	W	140	210	210	210
Running Current	Cooling / Heating	Nom	A	4.1 / 4.5	5.6 / 5.6	6.7 / 6.5	7.8 / 8.0
Power Supply			Ø / V / Hz	1 / 220-240 / 50	1 / 220-240 / 50	1 / 220-240 / 50	1 / 220-240 / 50
EER				3.55	3.21	3.01	2.70
COP				3.56	3.61	3.41	3.07
SEER				5.41	-	-	-
SCOP				3.81	-	-	-
Pdesign (@ -10°C)			kW	7.6	-	-	-
Seasonal Energy Label	Cooling / Heating		A / A	-	-	-	-
Annual Energy Consumption	Cooling / Heating		kWh	648 / 2,800	-	-	-
Piping Connection	Liquid		mm (inch)	Ø9.52 (3/8)	Ø9.52 (3/8)	Ø9.52 (3/8)	Ø9.52 (3/8)
	Gas		mm (inch)	Ø15.88 (5/8)	Ø15.88 (5/8)	Ø15.88 (5/8)	Ø15.88 (5/8)
	Drain	O.D. / I.D.	mm	32 / 25	32 / 25	32 / 25	32 / 25
Air Flow Rate		High / Medium / Low	m³/min	24.0 / 22.0 / 19.0	30.0 / 28.0 / 26.0	34.0 / 32.0 / 30.0	34.0 / 32.0 / 30.0
Sound Pressure	Cooling	High / Medium / Low	dBA	43 / 40 / 37	46 / 44 / 43	49 / 47 / 45	49 / 47 / 45
Sound Power	Cooling	Max	dBA	62	65	66	66
Dehumidification Rate			U/h	2.7	3.6	4.4	5.5
Dimensions	Body	W x H x D	mm	840 x 246 x 840	840 x 288 x 840	840 x 288 x 840	840 x 288 x 840
Net Weight	Body		kg	22.3	24.6	24.6	24.6
Decoration Panel	Model			PT-UMC1	PT-UMC1	PT-UMC1	PT-UMC1
	Color			Morning Fog (RAL 120-4)	Morning Fog (RAL 120-4)	Morning Fog (RAL 120-4)	Morning Fog (RAL 120-4)
	Dimensions	W x H x D	mm	950 x 25 x 950	950 x 25 x 950	950 x 25 x 950	950 x 25 x 950
	Weight		kg	5.0	5.0	5.0	5.0

OUTDOOR				UU37W UO2	UU43W U32	UU49W U32	UU61W U32
Compressor	Type			Twin Rotary	Twin Rotary	Twin Rotary	Twin Rotary
Airflow Rate		Nom	m³/min	90	110	110	110
Sound Pressure	Cooling	Nom	dBA	53	52	52	52
	Heating	Nom	dBA	54	54	54	54
Sound Power	Cooling	Max	dBA	66	67	68	71
Dimensions	W x H x D		mm	950 x 1,170 x 330	950 x 1,380 x 330	950 x 1,380 x 330	950 x 1,380 x 330
Net Weight			kg	85.0	96.0	96.0	96.0
Refrigerant	Type			R410A	R410A	R410A	R410A
	Charge		g	2,800	3,400	3,400	3,400
	Additional Charge (after 10m)		g/m	40	40	40	40
Operation Range (Outdoor)	Cooling	Min - Max	°C DB	-15 ~ 48	-15 ~ 48	-15 ~ 48	-15 ~ 48
	Heating	Min - Max	°C WB	-18 ~ 18	-18 ~ 18	-18 ~ 18	-18 ~ 18
Power Supply			Ø / V / Hz	3 / 380-415 / 50	3 / 380-415 / 50	3 / 380-415 / 50	3 / 380-415 / 50
Power Supply Cable			No. x mm²	5C x 2.5	5C x 2.5	5C x 2.5	5C x 2.5
Transmission Cable			No. x mm²	4C x 0.75	4C x 0.75	4C x 0.75	4C x 0.75
Circuit Breaker			A	20	20	20	20
Piping Length Total		Min - Max	m	5 ~ 50	5 ~ 75	5 ~ 75	5 ~ 75
Piping Elevation Difference	IDU - ODU	Max	m	30	30	30	30
Piping Connection	Liquid		mm (inch)	Ø9.52 (3/8)	Ø9.52 (3/8)	Ø9.52 (3/8)	Ø9.52 (3/8)
	Gas		mm (inch)	Ø15.88 (5/8)	Ø15.88 (5/8)	Ø15.88 (5/8)	Ø15.88 (5/8)

Note : 1. Due to our policy of innovation some specifications may be changed without notification.

2. Definition of Power Input Nominal conditions - Performance tested under EN14511

3. Capacities are based on the following conditions:

Cooling : - Indoor Temperature 27°C DB / 19°C WB - Outdoor Temperature 35°C DB / 24°C WB Heating : - Indoor Temperature 20°C DB / 15°C WB - Outdoor Temperature 7°C DB / 6°C WB

4. Annual energy consumption : based on average use of 350 running hours in cooling and 1,400 hours in heating per year at seasonal condition

5. This product contains fluorinated greenhouse gases (R410A)